



PRACTICALITY FEATURES

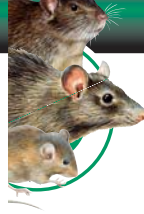
- Maki Block has a central hole for securing inside bait stations and preventing bait dispersion outside the station
- High number of baiting points: 375 blocks/bucket
- Square bucket of 7.5 kg

SAFETY FEATURES

- Bromadiolone is an anti-coagulant. Antidote Vitamin K1 is effective in case of children or pet poisoning
- Maki block contains Bitrex, a bittering agent that prevents the risk of consumption by children or pets



- Widely used in Europe and the US, Maki block is considered the reference maintenance block overseas
- Extensively tested both in cage conditions and field situations, trials have been run both in Australia, NZ and in the Northern hemisphere
- Recognised immediately by food safety auditors



MAKI® BLOCK

YOUR EVERYDAY RODENT BAIT

- Highly weather resistant
- Highly mould resistant
- Strong palatability & efficacy



50 ppm bromadiolone
20 gr block

BEST USED:

- In commercial accounts with ongoing baiting programs
- Also in places with high humidity content or during hot weather: in and around buildings
- Alternative to more toxic AIs (ie where secondary poisoning may be an issue)
- Xoxoxoxoxo xoxoxox



Maki Block, registered trademark of Liphatech SAS - Bitrex, registered trademark of Macfarlan Smith Ltd. - *Always use products according to the label*.

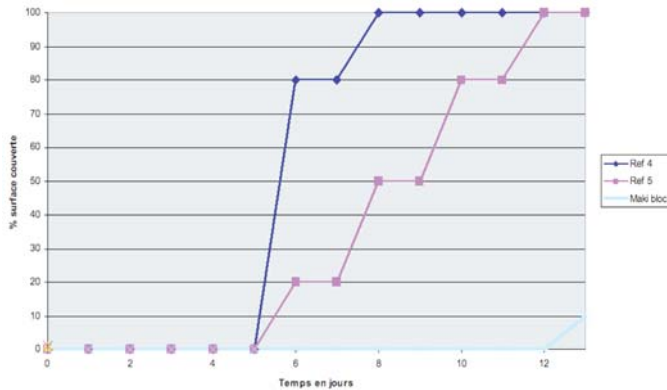
Printed in France - ETVOLAH - RESPONSABLE 001

ABSOLUTE WEATHER AND MOULD RESISTANCE

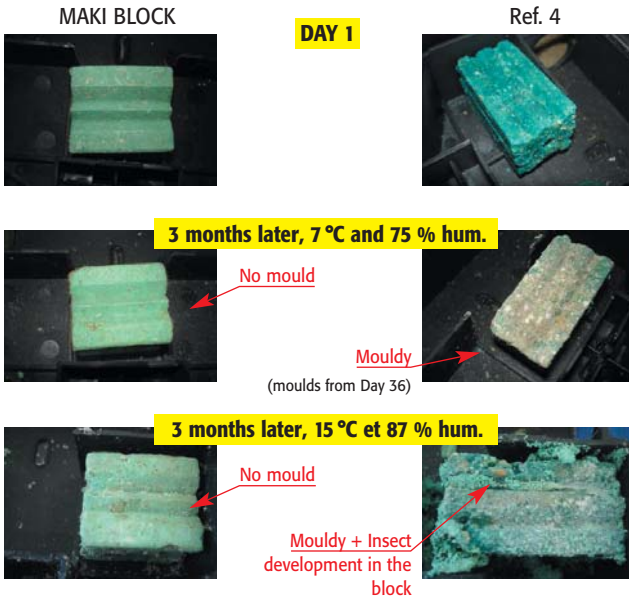
- Has been tested until 54 °C and does not melt
- Prolonged mould resistance. Up to 3 months in field-situations

LABORATORY TRIAL – LIPHATECH R&D CENTER

Evolution in % of the surface covered with mould over 13 days
(HR : 90 %, T °C : 30°C)



FIELD TRIAL



Tests run in a dairy factory with:
7°C and 75 % relative humidity
15 °C and 87 % relative humidity
(ie: baiting 12 Jan 2007 and assessment 03 April 2007)

HIGH EFFICACY & PALATABILITY

BROMADIOLONE, SINGLE FEEDING ACTION FOR RATS & MICE

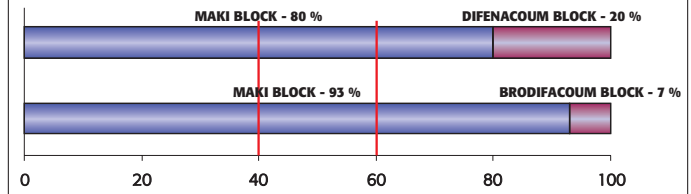
- Developed by LIPHATECH, the inventor of Bromadiolone
- Versatility of the AI: efficient on rats and mice



LIPHATECH MANUFACTURING PROCESS AND PALATABILITY:

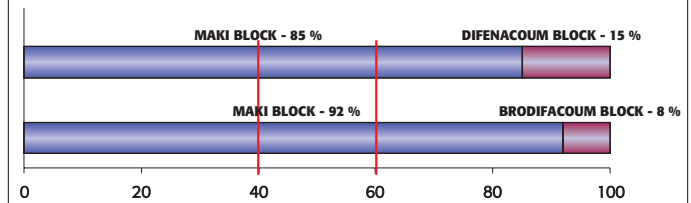
- Use of high food-grade ingredients in the formulation to enhance the palatability
- Shape: Multiple edges to encourage feeding, adapted to rodent gnawing habits
- Green dye helps to detect bait consumption in the excrement

Comparative palatability of Maki Blocks against other baits
(% consumption) - *Mus musculus*



Between red borders: No difference of acceptance between the two baits if results are between 40 % and 60 %
Under 40 %: less palatable // Above 60 %: more palatable

Comparative palatability of Maki Blocks against other baits
(% consumption) - *Rattus norvegicus*



⇒ Outperforms most competitor products in comparative trials